


TOGETHER

A song for Wiltshire Schools

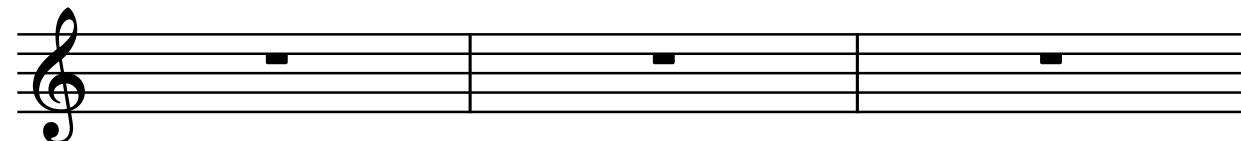
LEVEL 3 – VOCAL MELODY

INTRO

C F/C C

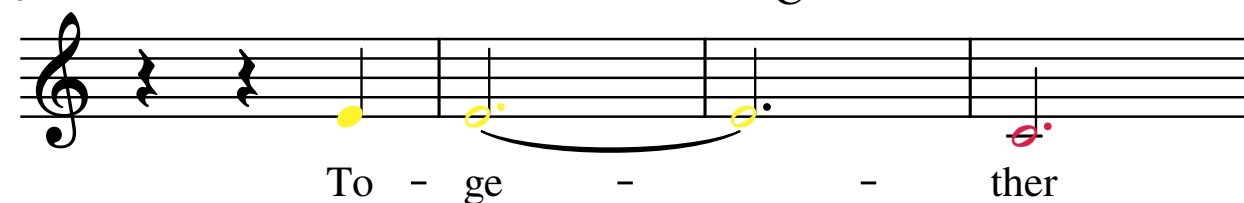


5 C F/C C



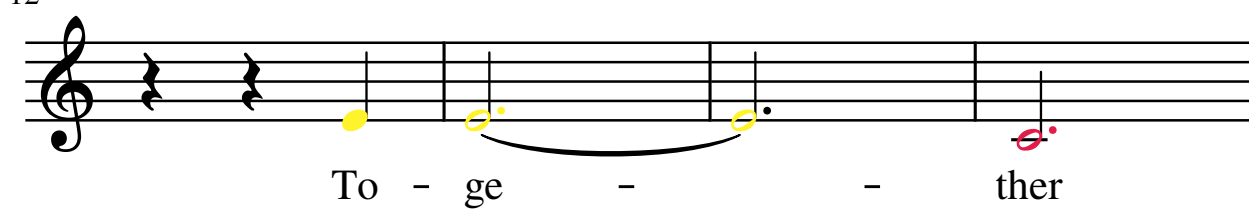
CHORUS

8 C F/C C



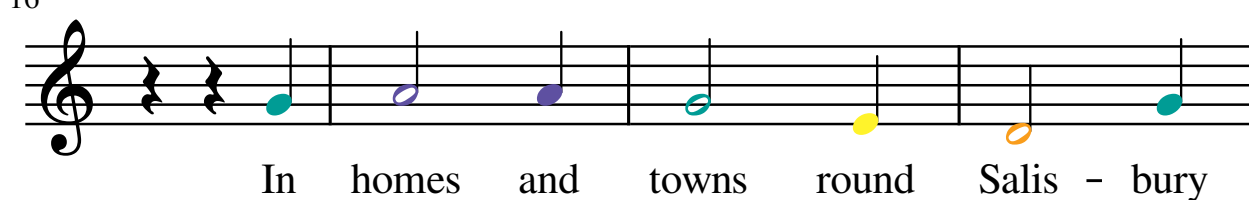
To - ge - - - ther

12



To - ge - - - ther

16 F C G



In homes and towns round Salis - bury

20 C F C G Am

plain Our voi-ces a - part, but our song's the same To-

25 F G C F/C C

ge - - ther

VERSE I

31 C F C

Through roll - ing fields and farm - ing land

36 C G7

Un - der planes and on ca - nals We see

40 C F C

beau-ti - ful but-ter-flies land-ing on_ flowers And

44

Am

G

F



oak trees wa - ving us by

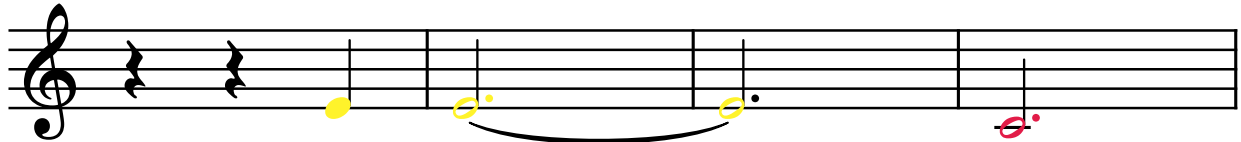
CHORUS

49

C

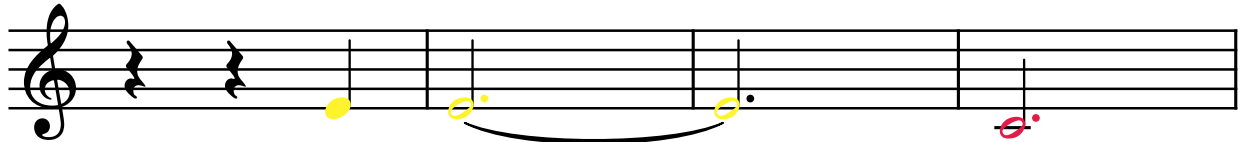
F/C

C



To - ge - - - ther

53



To - ge - - - ther

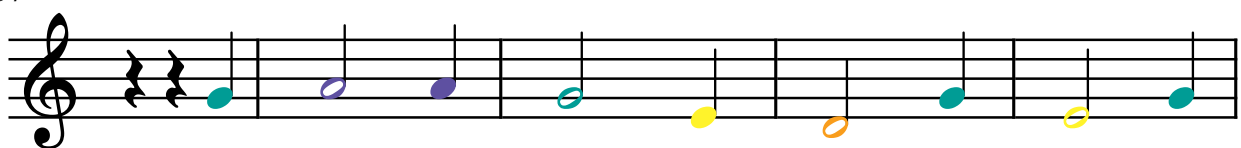
57

F

C

G

C



In homes and towns round Salis - bury plain Our

62

F

C

G

Am



voi - ces a - part, but our song's the same To -

66 F G C F/C C

ge - - - ther

VERSE 2
72 C F C

On bust - ling high streets, in town halls On

77 C G7

roads and cy - cle paths on mar - ket stalls We see

81 C F C

rain - bows in win - dows signs to ex - plore And

85 Am G F

neigh - bours wa - ving us by

CHORUS

90 C F/C C

To - ge - - - ther

Detailed description: This block contains the first four measures of the chorus. The melody is written on a treble clef staff. Measure 90 starts with two eighth rests, followed by a quarter note G4. Measure 91 has a quarter note A4. Measure 92 has a quarter note B4. Measure 93 has a quarter note C5. Chords C, F/C, and C are indicated above the staff. The lyrics 'To - ge - - - ther' are written below the staff, with hyphens indicating note durations.

94

To - ge - - - ther

Detailed description: This block contains measures 94-97. The melody continues from the previous block. Measure 94 has a quarter note G4. Measure 95 has a quarter note A4. Measure 96 has a quarter note B4. Measure 97 has a quarter note C5. The lyrics 'To - ge - - - ther' are written below the staff.

98 F C G C

In homes and towns round Salis - bury plain Our

Detailed description: This block contains measures 98-102. The melody is written on a treble clef staff. Measure 98 starts with two eighth rests, followed by quarter notes G4, A4, and B4. Measure 99 has quarter notes C5 and B4. Measure 100 has quarter notes A4 and G4. Measure 101 has quarter notes F4 and E4. Measure 102 has quarter notes D4 and C4. Chords F, C, G, and C are indicated above the staff. The lyrics 'In homes and towns round Salis - bury plain Our' are written below the staff.

103 F C G C Am

voi - ces a - part, but our song's the same To -

Detailed description: This block contains measures 103-106. The melody is written on a treble clef staff. Measure 103 has quarter notes G4, A4, and B4. Measure 104 has quarter notes C5 and B4. Measure 105 has quarter notes A4 and G4. Measure 106 has quarter notes F4 and E4. Chords F, C, G, C, and Am are indicated above the staff. The lyrics 'voi - ces a - part, but our song's the same To -' are written below the staff.

107 F G C F/C C

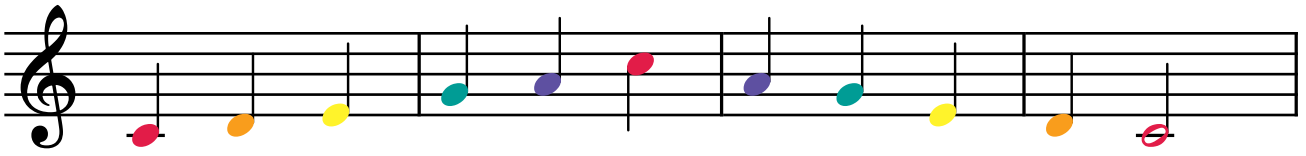
ge - - - ther

Detailed description: This block contains measures 107-110. The melody is written on a treble clef staff. Measure 107 has a quarter note G4. Measure 108 has a quarter note A4. Measure 109 has a quarter note B4. Measure 110 has a quarter note C5. Chords F, G, C, F/C, and C are indicated above the staff. The lyrics 'ge - - - ther' are written below the staff.

IMPROVISATION SECTION

114

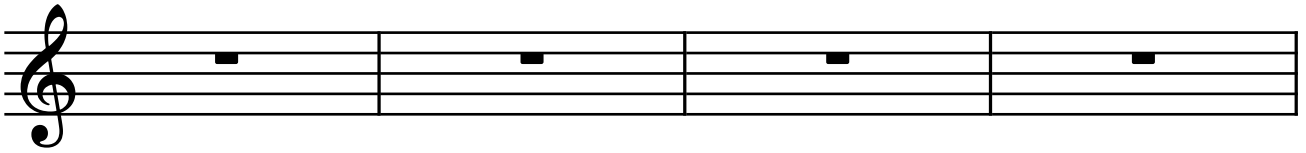
C



(Trying playing any of these notes however you like until verse 3!)

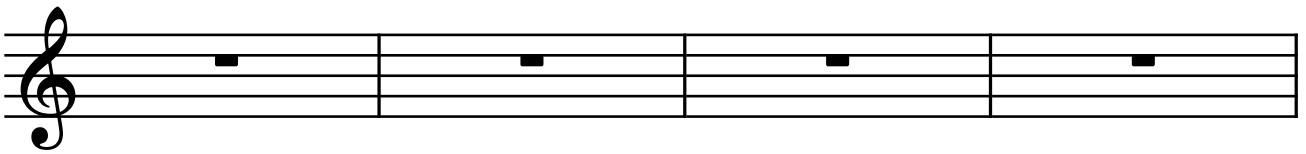
118

Am



122

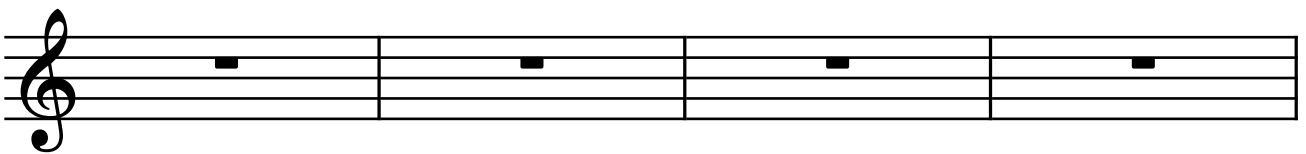
F



(Keep going!)

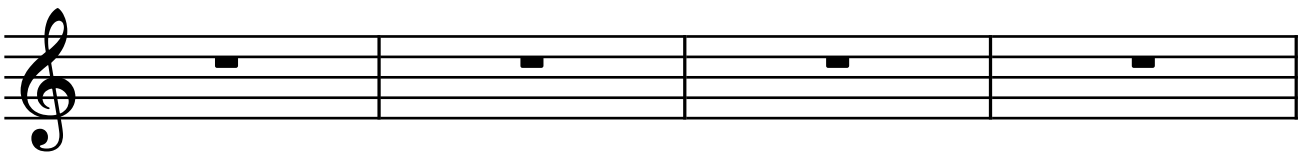
126

C



130

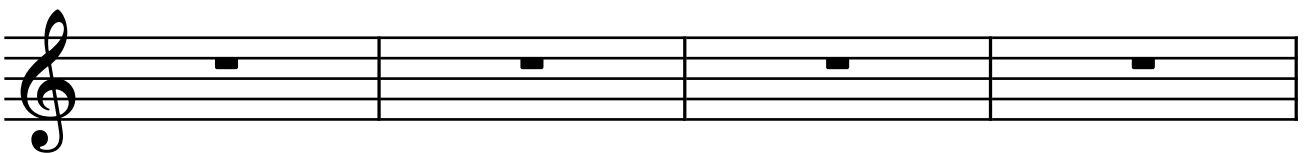
C



(Keep going!)

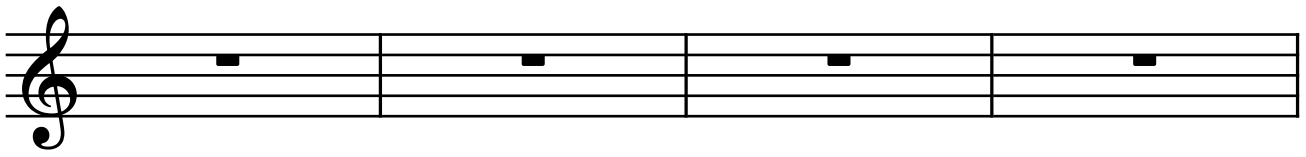
134

Am



138

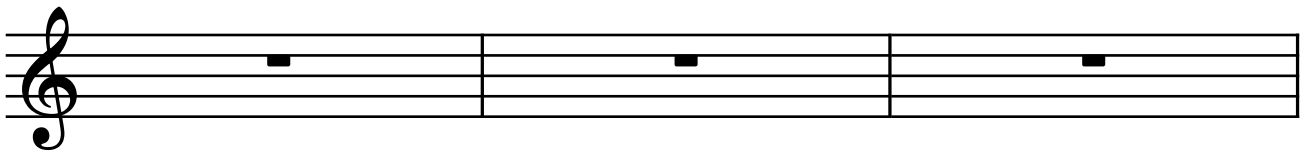
F



(Keep going!)

142

C



VERSE 3

145

C

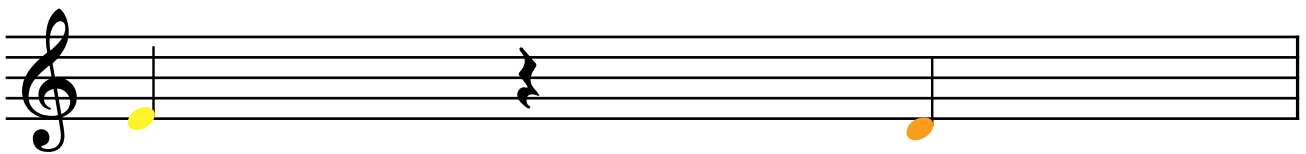
F



3. From stones that have stood five thou - sand

149

C



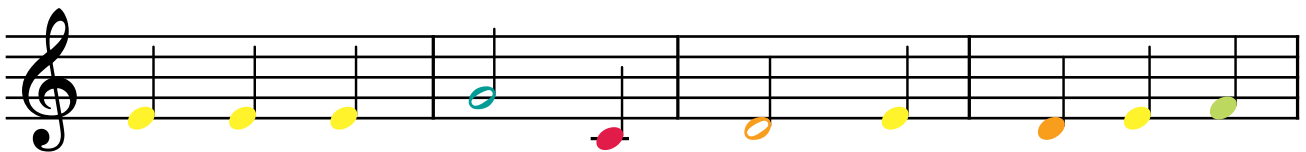
years

Ca -

150

C

G7



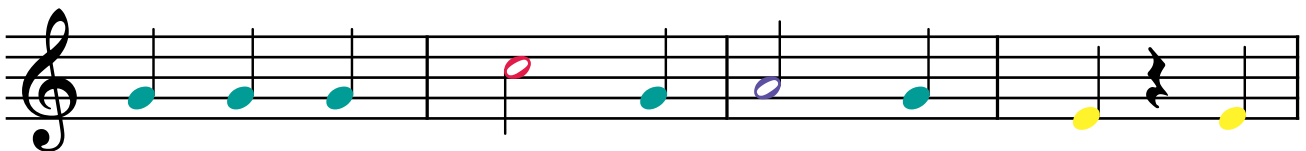
the - drals and cas - tles built right here We see

154

C

F

C



fac - t'ries and farms that went be - fore Our

158 Am G F

his - to - ry wa - vingus by

CHORUS

163 C F/C C

To - ge - ther To - ge - ther

171 F C G C

In homes and towns round Salis - bury plain Our

176 F C G Am F

voic - es a - part, but our song's the same To - ge -

182 G C F/C C

- ther



Supported using public funding by



ARTS COUNCIL ENGLAND

