



## Things to remember:

*continued*

There's no requirement to use books or paper for music.

Recordings can be a helpful way to consider progress and evidence it.

Consider recording verbal feedback directly onto recordings. For example, keep the video camera rolling at the end of the performance as you (and your pupils) feed back to the class – referring to previous performances and identifying how your pupils have progressed since last time.

Pupil views – have a chat with children on a fairly regular basis – even quickly at the end of a lesson, then you'll be prompting them to remember things.

Pupil view questionnaires help them be prepared should they be asked questions during a review or an Ofsted inspection.

Floor books can be helpful to use as a memory jogger so children, if asked, have something to prompt their conversations about music.

You don't need anything grand, just a scrap book documenting what they've learnt. Some schools add QR codes to link to examples of children's work.

## Things to avoid:

Summative assessment, having a lot of tests or testing, shouldn't be driving your curriculum – assessment should be part of the learning process and shouldn't take over.

A one-size-fits-all approach for assessment across the school doesn't necessarily work for music.

Just because English and maths are assessed every term doesn't mean that music should be too.

Jumping through hoops and / or ticking a checklist is not the way to go.

It takes up too much curriculum time and does not improve musical understanding.

If you are being asked to do lots of formal assessments that involve creating lots of data, it's valid to question why –

data like this has very little impact on learning.

Photos have their place, but they carry a health warning –

they don't show progress.

## Discussions with your Senior Leadership Team:

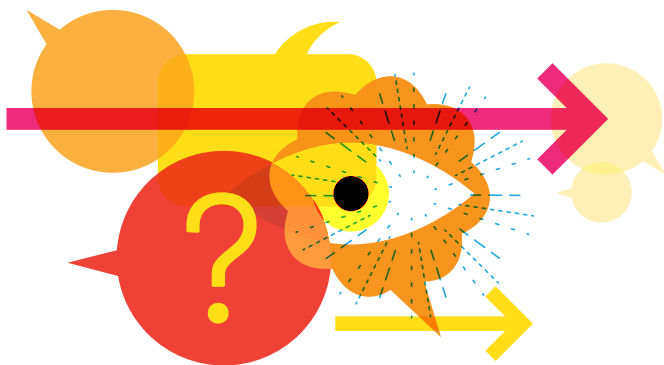
Consider sharing the Ofsted Research Review for Music approach (which links to the Education Inspection Framework) and other relevant documents with SLT.

Have open discussions about the suggestions.

*Ofsted Research Review Series: Music July 2021*

*Model Music Curriculum, March 2021*

*National Plan for Music Education, June 2022*



[www.wiltshiremusicconnect.org.uk/families](http://www.wiltshiremusicconnect.org.uk/families)  
[info@wiltshiremusicconnect.org.uk](mailto:info@wiltshiremusicconnect.org.uk)

  search for **Wiltshire Music Connect**

wiltshire  
music  
connect

Wiltshire Music Connect is the music education hub for Wiltshire: connecting all children and young people with musical opportunities. Because music is excellent for developing young minds.

Supported using public funding by



ARTS COUNCIL  
ENGLAND

Wiltshire Council