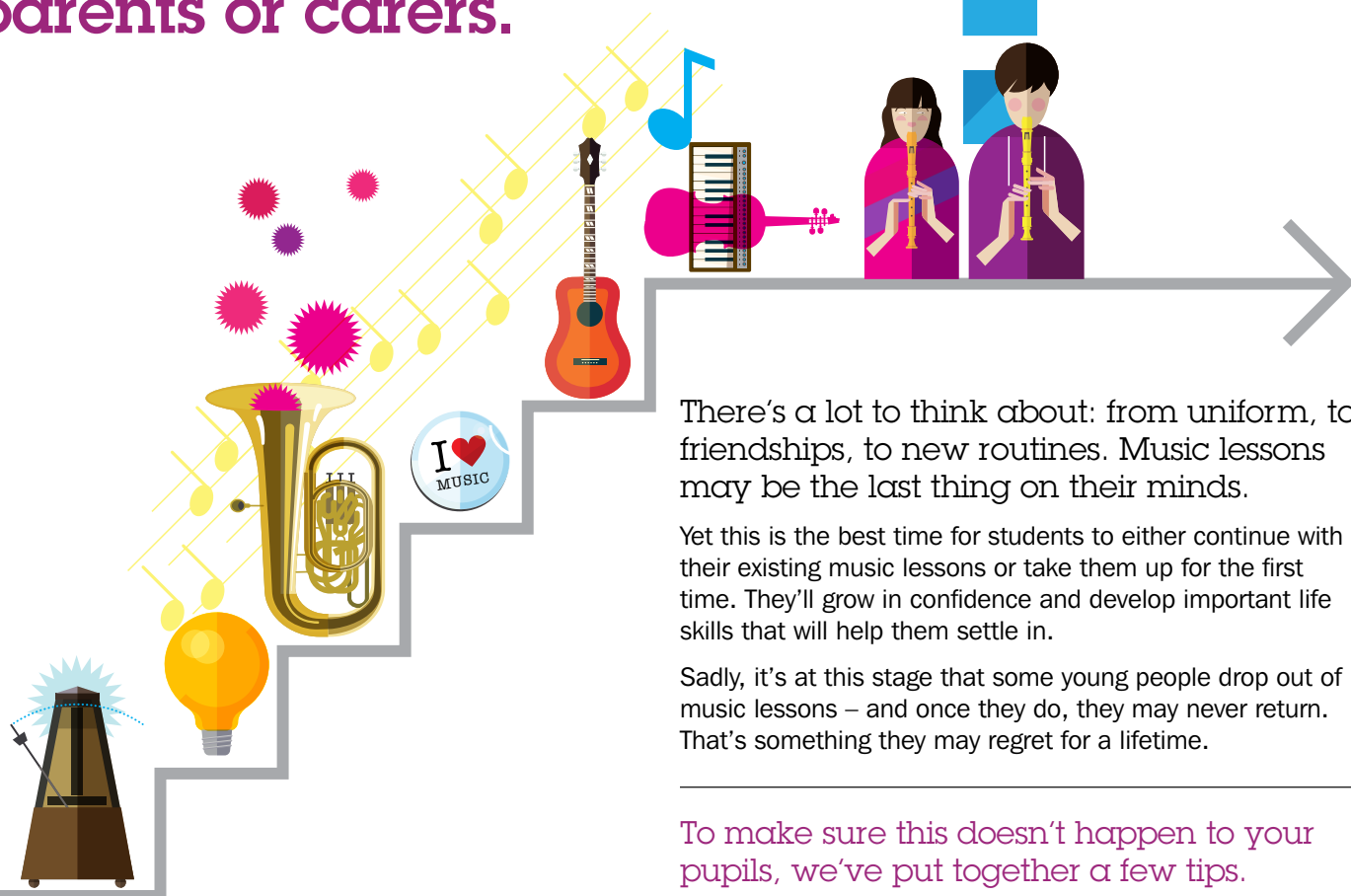


Your pupils and music at transition

A message to primary school teachers and heads from the team at Wiltshire Music Connect

Read inside about subsidies for your pupils and your school.

Moving from primary to secondary school is a new adventure for your pupils and their parents or carers.



There's a lot to think about: from uniform, to friendships, to new routines. Music lessons may be the last thing on their minds.

Yet this is the best time for students to either continue with their existing music lessons or take them up for the first time. They'll grow in confidence and develop important life skills that will help them settle in.

Sadly, it's at this stage that some young people drop out of music lessons – and once they do, they may never return. That's something they may regret for a lifetime.

To make sure this doesn't happen to your pupils, we've put together a few tips.

You can also visit our website to request leaflets for your school and parents or carers, and find out about your school's entitlement to support and funding for music.

wiltshire
music
connect

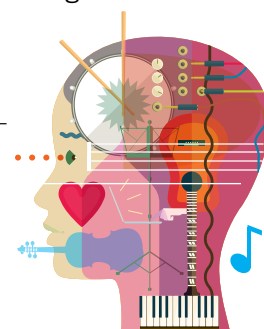
here to support your child, you, and your child's school

www.wiltshiremusicconnect.org.uk/schools

info@wiltshiremusicconnect.org.uk



search for **Wiltshire Music Connect**



Five ways to make sure your students don't stop making music



1 Send an initial contact email to the head of music or performing arts at your local secondary school

Include a list of year 6 students who have music lessons and what level they've reached, as well as an overview of what sort of curriculum music all pupils have experienced.

2 Talk to them about what else you can do, together, to make sure pupils don't drop out of music

3 Encourage parents or carers to look out for information about music lessons and groups in their secondary school induction pack, during parents evenings or open days, etc

4 Let parents or carers know about subsidies for lessons and instrument hire

See www.wiltshiremusicconnect.org.uk/families/financial-support/

We provide 40–100% subsidy for lessons and instrument hire for pupils at primary and secondary age, who:

- are looked-after in care
- are entitled to free school meals or eligible for pupil premium
- have special educational needs and disabilities
- can't afford tuition for other economic/social reasons

5 Signpost parents or carers to our website for more opportunities and support including our Associates directory for tutors in a wide range of instruments and genres

www.wiltshiremusicconnect.org.uk/schools
info@wiltshiremusicconnect.org.uk

  search for **Wiltshire Music Connect**

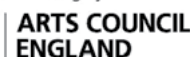
We are very grateful to the following stakeholders who helped us to create these leaflets by providing invaluable feedback:

Jo Carr, Julia Drake, Nell Farrally, Vayia Malamidou, Roz Osborne, Marie Negus, Kim Rance, John Sandford, John Joy, Adam Varney, Claire Evans.

wiltshire
music
connect

Wiltshire Music Connect is the music education hub for Wiltshire: connecting all children and young people with musical opportunities. Because music is excellent for developing young minds.

Supported using public funding by



Wiltshire Council
Where everybody matters