

Annual Report Academic Year 2017 — 2018

Another year of
progress and increased
participation through
our growing community
of stakeholders

The Music Education Hub for Wiltshire

Connecting all children and young people
with musical opportunities. Because music
is excellent for developing young minds.

www.wiltshiremusicconnect.org.uk



A message from our Chair

This year we have again seen music **strengthen and develop** in Wiltshire, particularly in relation to inclusivity. This is despite wider national trends suggesting the opposite.

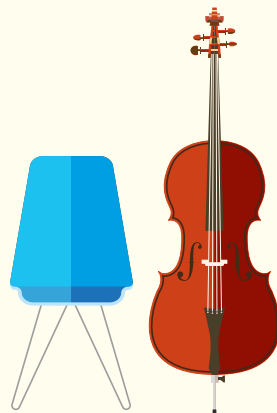
In what I believe is an innovative and future-facing approach, our small Hub team (the equivalent of four full-time staff) does not deliver any provision for children and young people itself. Instead, it **works strategically to enable music in the county**: working with schools, Associates (freelance music leaders), music organisations, parents, Council departments and others who work with children and young people.

As a result, our reported figures for 2017 – 2018 show some **significant increases in children pursuing music** across the county. We've also gathered data more consistently – from schools, Associates and other providers. This means that **we know more** about what's going on in Wiltshire, and **we're better placed to direct resources** to where they're most needed.

We believe that this strategic, collaborative, approach is the right strategy in the face of the uncertainty that seems to be a fact of life nowadays. It is an effective **multiplier of our resources** as it helps a larger and wider group provide the ongoing momentum to build a sustainable music education economy in Wiltshire.

We intend to compliment this effort with cash over and above our Arts Council funding: in the coming year we will begin fundraising using our sister organisation Music Connect CIC.

Tony Spath
Chair, Wiltshire Music Connect Stakeholder Board



Why Music?

This year we produced Why Music? – a series of nationally-recognised guidance leaflets to answer the questions that schools, parents/carers and young people ask about music in school, and the choices they can make.

wiltshiremusicconnect.org.uk/whymusic

A-level music: a guide for parents and carers

Why choose A-level music?

Enjoyment.

Motivation.

Academic achievement.

Confidence.

Fulfillment.

Whatever your hopes for your child's final years of study at school, A-level music is a wise choice.

If they have a passion for a subject, they're much more likely to enjoy their study and be motivated to revise and practice.

Yet there are so many other reasons why they'll benefit from studying music:

Read on to find out more, and learn about what's involved in A-level music.

here to support your child, you, and your child's school

www.wiltshiremusicconnect.org.uk, info@wiltshiremusicconnect.org.uk

[f](#) [t](#) [search for Wiltshire Music Connect](#)

Any school can be a musical school

A message to primary school teachers and heads from the team at Wiltshire Music Connect

More music means more fun for your pupils and your school

What if...

a large number of scientific studies had found that those who use activity that could improve our cognitive functions, help our memory systems to work, help us to learn language, help us to moderate our emotional states, help us to solve complex problems and help our brains to be healthier into later life?

That activity, while beneficial at undertakes at any time during our lives, was actually found by scientists to be most beneficial if it was undertaken before the age of seven?

What if that activity is music?

Dr Alan Watts
Academic, researcher and music education advocate

We all know that music can have a transformative effect on pupils and on school life. That's why we've put together a range of support to help any school be a musical school.

here to support your child, you, and your child's school

www.wiltshiremusicconnect.org.uk, info@wiltshiremusicconnect.org.uk

[f](#) [t](#) [search for Wiltshire Music Connect](#)

Sign up to our e-bulletin to be notified when the next Why Music leaflet is out:

www.wiltshiremusicconnect.org.uk/register-for-bulletins/

“ I found your website full of so much information and believe that we are very fortunate to have such great music provision in the county. ”

Roz Amison – Parent

There were 68,347 children and young people in 237 Wiltshire schools during the academic year 2017–2018¹



¹ May 2018 school census data (all LA maintained, academy and free schools).

Children and young people

We continued to respond to what young people told us in our *Take Note youth consultation 2016*². We gathered more information about what's happening on the ground and carried out a 'top up' piece of research. Once again the importance of music to young people's well-being came through very strongly.

Pupils taking part in First Access activities

20% of primary school children³

7,775 pupils up from 7,446 last year (+4.4%)

Pupils learning an instrument or singing through individual and small group tuition

4,908 up from 4,119 last year

+ a further 1,085 learning in large groups (not *First Access*)

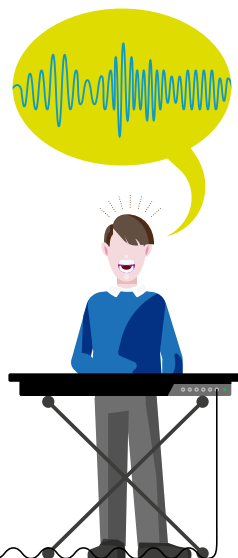
Pupils receiving subsidised school-based instrumental / vocal tuition on account of disadvantage or need (including SEN/D)⁴

377 pupils up from 274 last year (+37.5%)

36% of these also benefitted from subsidy last year

“... thank you so much for the prompt bursary payment for my students. It will really mean a lot to their parents and help their progress tremendously.”

Deborah John – Associate



² Take Note 2018 wiltshiremusicconnect.org.uk/were-still-listening-take-note-2.

³ The vast majority of children taking part in First Access were in primary schools. The total primary school population was 38,957 in May 2018.

⁴ We invested £54,500 in school tuition subsidies this year – 9% of our hub funding.

Children and young people continued

Pupils hiring instruments from our county-wide scheme

647 up from 607 last year

80 of these received subsidised instrument hire on account of disadvantage or need, up from 42 last year

Children and young people taking part in ensembles, groups and bands

7,986 up from 5,380 last year (+48%)⁵

Group/ensemble/band opportunities supported by our funding and/or provided by Associates⁶

190 ensembles up from 176 last year (+8%)

243 school-based ensembles up from 160 in the previous year

Following consultation, [we commissioned a new County-wide singing initiative](#) **Wiltshire Voices** from Pound Arts and have plans for four new choirs plus a BSL signing choir



“ I have to say that SAYM has been one of the most inclusive organisations my son has been a part of and I am very grateful for the support they’ve given him.



PJ – Parent

“ ... it is a really good thing that you are doing. Playing music helps to put problems into perspective and is a wonderful thing to do.

Karen Baldwin – Parent

⁵ This significant increase is, in part, due to improvements in data collection and the Hub's engagement with schools. This figure includes school-based groups which the Hub does not directly support.

⁶ We have not funded/subsidised all of these, although we support Associates in a range of ways.

Schools

Schools engaging in music education hub ‘core’ role activity⁷ 214 up from 197 last year (+8.6%)

Within this there were 50 out of 57 small schools
– up from 47 last year

Schools reporting First Access activity⁸

49% of schools offering First Access, 117 up from 106 last year (+10.3%)

First Access Champions supported 84 schools in considering / choosing First Access models

Special Schools

We supported Larkrise School to work with the national Open Orchestra scheme, and Rowdeford School to work with a specialist music tutor to help pupils play together in a group. This culminated in a first out-of-school concert for Rowdeford.

Schools supported with music education planning (SMEP) 162 up from 132 last year (+23%)

We also saw 87 schools engage in more than one way. Within this, 23 out of all 31 secondary schools in the county were involved: an increase from 14 last year.

Schools reached by our singing strategy

150 schools up from 121 schools (+24%) last year

We also saw 78 schools engage in more than one way. seven secondary schools took part in our Songwriting Competition and the two prize winners, Trafalgar and Matravers Schools, featured on BBC Wiltshire.



⁷ First Access, Ensembles, Progression Routes, or Singing – see www.wiltshiremusicconnect.org.uk/about/hub-roles.

⁸ The principle of First Access (FA) music also known as wider opportunities or Whole Class Ensemble Tuition (WCET), is to provide whole classes or groups with the opportunity to experience and enjoy music making for the first time.

We provide support for First Access through a mix of subsidy, resources, advice and training.

Workforce

The number of our Associates has increased from 150 to 172. These are professional tutors, music leaders, artists and practitioners as well as organisations – all who contribute an estimated minimum £2.3m per year⁹ to the county's economy.

Associate Organisations that ran their own programmes **reported 97 different music related performances attended by an estimated 2,167 children and young people**
2,087 (96%) of these received reduced price entry

We introduced **Inclusive Music Aware** and **Early Years Associate** 'status'.

Our **Continuing Professional Development (CPD) events attracted 554 attendances – up from 504 last year.** This included 105 schools, 73 Associates and representatives of 21 other organisations.



“ The previous report was very useful to us and helped support funding applications as evidence for a need for more music services. ”

Riverbank Studios – Associate

“ I just wanted to say thank you... for such an enjoyable afternoon. It was so lovely to have the opportunity to meet up with other musicians and talk. ”

**Richard O'Mahony –
Head of Music, St Augustine's
Catholic College**

⁹ Average 15hrs per week x 33 weeks @ equivalent £33 per hour x 122 individual Associates + organisations' education related turnover at £300k.

Wider outcomes for Wiltshire

Our work contributes to the bigger picture Wiltshire Council's priorities¹⁰ including:

Strong communities

Growing the economy

Working with partners as an innovative and effective council



What's next

In academic year 18/19 we are improving on:

Engagement

we'll continue to reach more people, but also encourage people to be more deeply involved

Intelligence

we'll get better at sharing the information we gather, to increase its use and impact

Responsiveness

we'll continue to use resources to help fill gaps and respond to what we hear that you need across the county and within musical clusters

Geographic spread

we'll improve teachers' access to professional development by touring CPD sessions to different musical clusters/areas of the county

Access and inclusion

we'll continue to improve access and inclusion across all of our work

¹⁰ Wiltshire Music Connect is part of Wiltshire Council's Commissioning, Performance and School Effectiveness Team.

Wiltshire Music Connect Team (current)

Sophie Amstell Development Manager, Schools & Curriculum

Nick Howdle Leader

Ruth Jones Development Manager – Singing, Access & Inclusion

Victoria Moore Administrator / Office Coordinator

Ruth Starr Finance

Martin Stewart Development Manager – First Access & Progression

7 Musical Cluster Coordinators each working approx. 13 days per year per cluster, some covering more than one cluster:

Emily Malcolm, Julia Falaki, Steph Farr, Marie Negus, Sandra Ball, Roz Osborne, Claudia Wood

Nell Farrally Evaluation

Cora Seaman Social Media & CPD support

Anita Holford / Writing Services Communications support

Sarah Trenchard, Fran Andrews First Access Champions

Stakeholder Board

Tony Spath, Jo French, Nigel Evans, Russ Tunney, Maud Saint-Sardos, Emma North

Non-voting board members / observers:

Sylvie Campen (Arts Council England)
Meril Morgan (Wiltshire Council)

Thanks also to:

Tina Ward, Barbara Chick from Learning Resources Hub who manage the Instrument Hire Scheme, and its Steering Group members **Jane Parsons, Luke Pickett and Angela Williams**

And to **Helen Fudge, Jackie Pattenden, Alison Pascalidis, Beckie Wright, Jonathan Westrup, Andy Agombar, Andrew Boynton** and all our Associates – see back cover

“ It was all really useful ...
The best CPD that I’ve ever had
and it felt tailor-made. ”

Christine Shakespeare
St Mark’s Church of England Primary



**Be part of our growing community:
get information, support training, resources
and have your say:**

Sign up for the e-bulletin

www.wiltshiremusicconnect.org.uk/register-for-bulletins

Follow us



Search for **Wiltshire Music Connect**

Visit our website

www.wiltshiremusicconnect.org.uk

Download this report

and/or see how the money was spent:

www.wiltshiremusicconnect.org.uk/annual-report

With thanks to everyone we worked with last year,
including our Associates who are currently:

Jon Veale / Simon Sheffield / Allen Cheshire / The Sound Emporium / Claire Schollick / Will Blackham / Cheri Richens / Jo Nash / Sugne Du Toit / Jane Parsons / Catherine Hurley / Amy Thomas / Wiltshire Young Singers / Tim Crouter / Paula Boyagis / West of England Youth Orchestra / Lorraine Mahoney / Caroline Tyson / Bradley Miles / Jo Hampson-Gilbert / Salisbury Area Music Co-operative / Alex Miles / Martin Stewart / Carrie Farnell / Jan Forsyth / Adrian Taylor-Weekes / Christopher Hunt / Ruth Phillips / Sonia Parkinson / Azhaar El-Saffar / Ralf Dorrell / DeeJ Dhariwal / Roz Osborne / Joshua West / Andrew Bull / Emma Bolton / Bob Ball / South West Music School / Town Hall Arts / Theresa Murrell / Sandra Ball / Debbie Rickhuss / La Folia / Elinor Tolfree / Sarah Richfield-Wyatt / Emily Askew / Sandra Howe / Riverbank Studios / Adam Varney / Hazel Ricketts / Rob Priestley / Jane Lee / Jackdaws Music Education Trust / Tom Skelton / Megan Jennings / James Allard / Matthew Hind / Lee Moss / SoCo Music Project / Andrew Murphy / Pam Jolley / Kay Haycock / Kandu Arts Community Projects CIC / Naomi Ibbetson / Sarah Phillips / Kristina Takashina / Gary Pike / Jonathan Dunn / Matt Norman / Tim JW Badgery / Emma Webb / Rhythm Instinct Ltd. / Alphonso Archer / Wiltshire Youth Jazz Orchestra / Tom Gwyther / Louise Jordan / Louise Jenkins / Emily Isaac Johnson / Christine Moore / Sara Trenchard / Valerie Winning Hart / Kate Courage / Mark Walker / Noeline Beesley / Sophie Holden / Evolve Music / Karen Carey / Peter Bede / Teresa Shaw / Angela Williams / John Sandford / Matt Thorpe / Wiltshire Creative / Kim Rance / Iain Kirman / Kirsty Fowler / Andrew Cook / Luke Pickett / Catherine Ring / Charlotte Sloane Hill / Sue Hull / Celebrate Voice / Chris Sanders / SAYM Senior Wind Band / Michele Lomas / Sophia Moody / Sam Blake / Ella Emery / Theresa Cole / Carmen Tunney / A.C.T.S Theatre Arts School (A Chance To Sparkle) / Sarah Scutt / Mary Pilcher-Clayton / Gary Lucas / Fern Joyce / Julia Killick / Suzanne Wilson / Therapeutic Media Company / Jenny Ridley / Sarah Hooper / Siân McInally / Actiontrack Performance Company / Anthony Seaman / Lorna Davis / Swindon Music Co-operative / Mike Daniels / Deborah John / Amanda Kibble / Richard Parsons / Sam Goffen / Wiltshire Music Centre / Karen Stokes / Fran Andrews / Louise Jones / Simon Parker / David Garcia / Celia Waghorn / Christine Shakespeare / John Joy / Vanessa Harris / Tim Fosker / Phil Donovan / Jo Hind / Emma Hughes

**wiltshire
music
connect**

c/o Wiltshire Music Centre
Ashley Road, Bradford on Avon
Wiltshire BA15 1DZ

www.wiltshiremusicconnect.org.uk
info@wiltshiremusicconnect.org.uk
01225 713991

Supported using public funding by



**ARTS COUNCIL
ENGLAND**

Supported by

Wiltshire Council
Where everybody matters